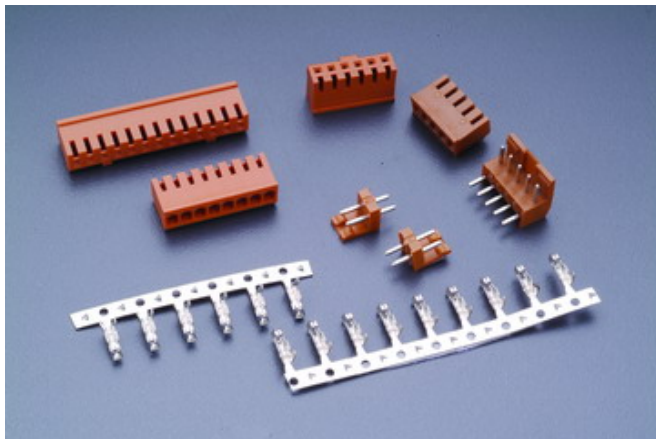


# 12500H SERIES

.098" (2.5mm) PITCH WIRE TO BOARD CONNECTOR



## Specifications

Current rating: 3A AC,DC

Voltage rating: 250V AC,DC

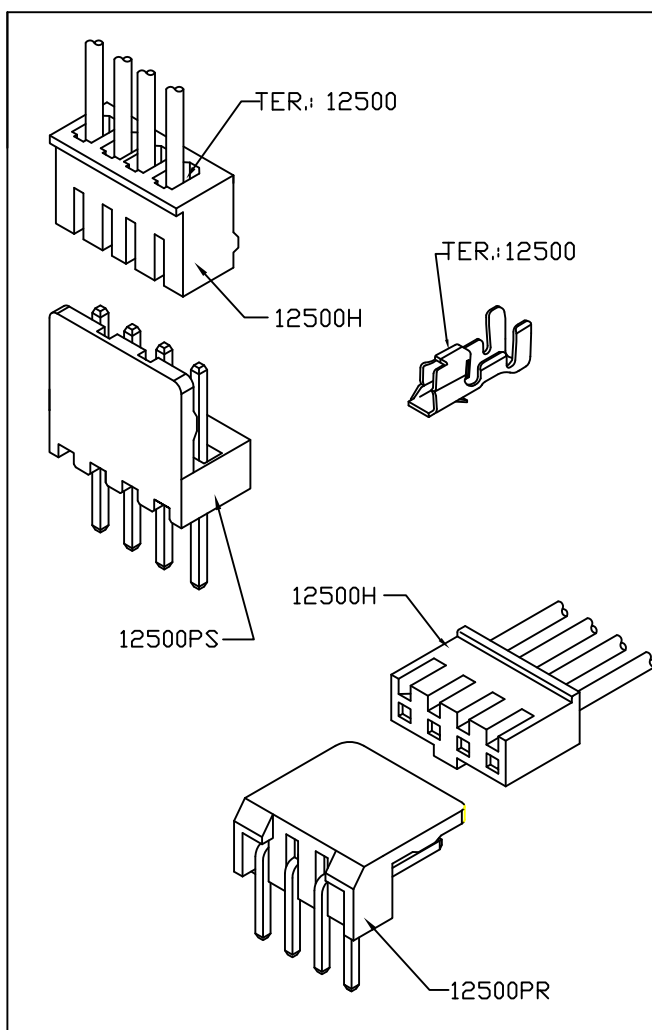
Temperature range: -25°C to +85°C  
(including temperature rise)

Contact resistance: Initial value/10mΩ Max.  
After environmental testing/20mΩ Max.

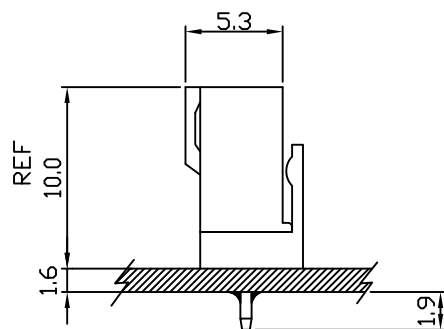
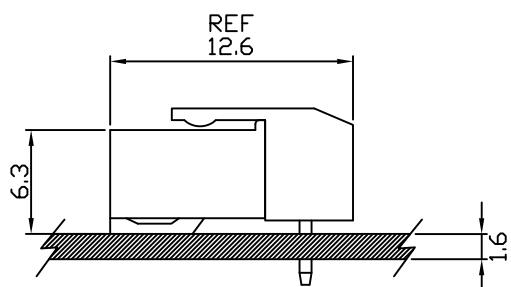
Insulation resistance: 1000MΩ MIN.

Withstanding voltage: 800V AC/minute

Applicable wire: AWG#22-28



## Assembly layout

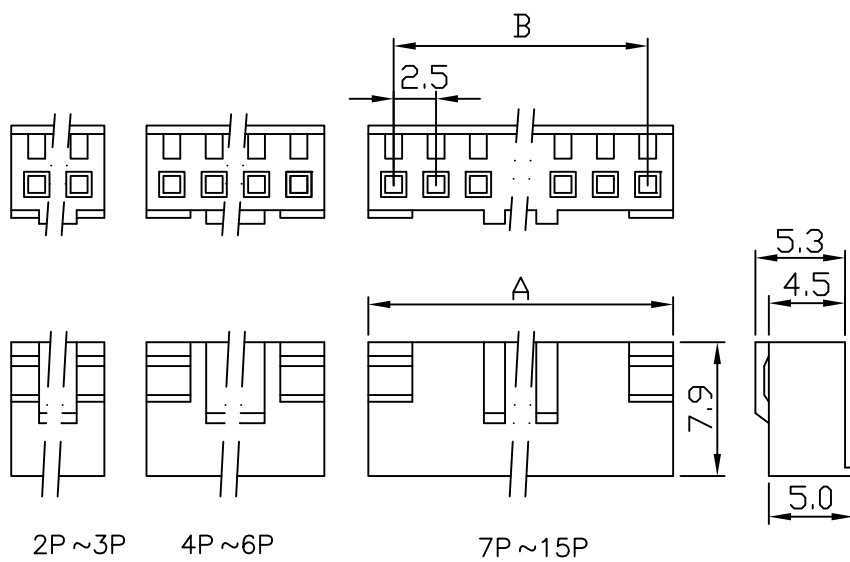


# 12500H .098" (2.5mm) PITCH HOUSING

## Features:

unit:mm

- \* MAT'L: NYLON 66 UL94V-0
- \* MATES WITH: 12500 SERIES TERMINAL
- \* ACCEPTS WITH: 12500PS 12500PR SERIES WAFER



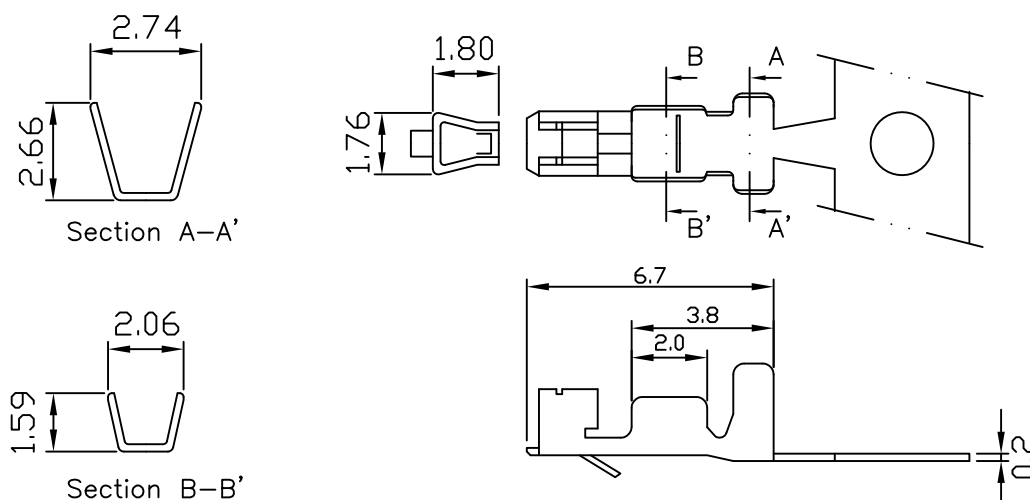
PART NO.	A	B
12500H- 02	5.00	2.50
12500H- 03	8.00	5.00
12500H- 04	10.5	7.50
12500H- 05	13.0	10.0
12500H- 06	15.5	12.5
12500H- 07	18.0	15.0
12500H- 08	20.5	17.5
12500H- 09	23.0	20.0
12500H- 10	25.5	22.5
12500H- 11	28.0	25.0
12500H- 12	30.5	27.5
12500H- 13	33.0	30.0
12500H- 14	35.5	32.5
12500H- 15	38.0	35.0

# 12500 .098" (2.5mm) PITCH TERMINAL

## Features:

unit:mm

- \* THICKNESS: 0.2mm
- \* MATES WITH: 12500H SERIES HOUSING
- \* ACCEPTS WITH: 12500PS 12500PR SERIES WAFER



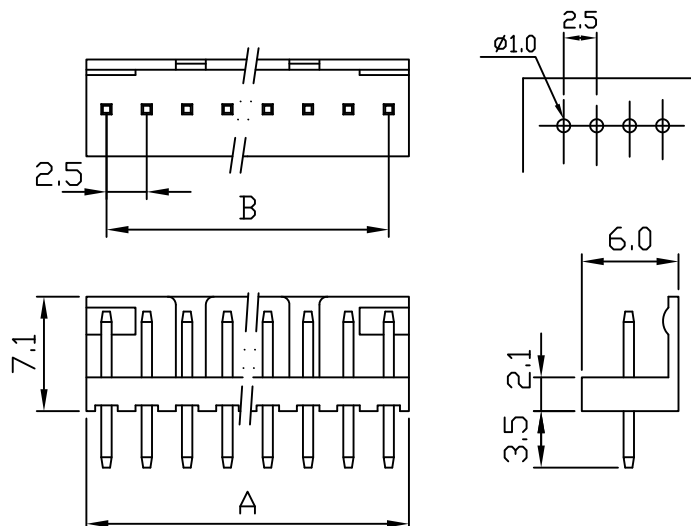
PART NO.	WIRE RANGE	INSULATION O.D.	MATERIAL	FINISH	QTY/REEL
12500	AWG#22-#28	1.90mm(max)	Phosphor Bronze	Tin-plated	10,000

## 12500PS .098" (2.5mm) PITCH Headers—Straight

### Features:

unit:mm

- \* MAT'L: BODY: NYLON 66 UL94V-0  
PINS: BRASS TIN PLATED
- \* MATES WITH: 12500H SERIES HOUSING
- \* ACCEPTS WITH: 12500 SERIES TERMINAL



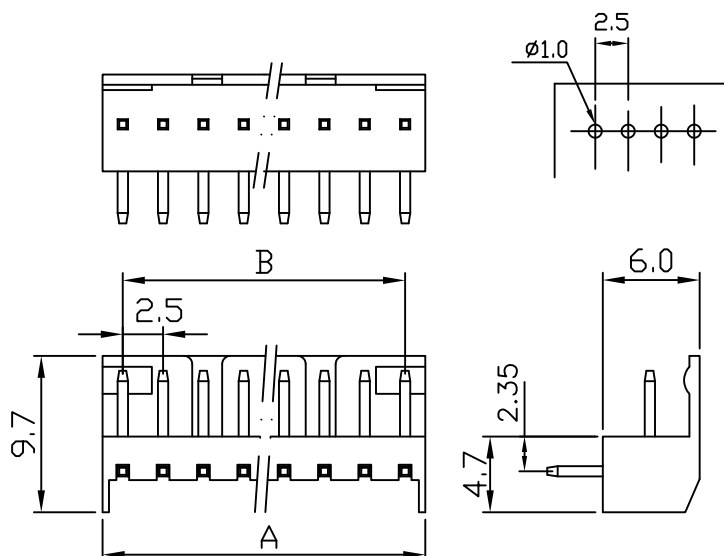
PART NO.	A	B
12500PS-02	5.00	2.50
12500PS-03	7.50	5.00
12500PS-04	10.0	7.50
12500PS-05	12.5	10.0
12500PS-06	15.0	12.5
12500PS-07	17.5	15.0
12500PS-08	20.0	17.5
12500PS-09	22.5	20.0
12500PS-10	25.0	22.5
12500PS-11	27.5	25.0
12500PS-12	30.0	27.5
12500PS-13	32.5	30.0
12500PS-14	35.0	32.5
12500PS-15	37.5	35.0

## 12500PR .098" (2.5mm) PITCH Headers—Right Angle

### Features:

unit:mm

- \* MAT'L: BODY: NYLON 66 UL94V-0  
PINS: BRASS TIN PLATED
- \* MATES WITH: 12500H SERIES HOUSING
- \* ACCEPTS WITH: 12500 SERIES TERMINAL



PART NO.	A	B
12500PR-02	5.00	2.50
12500PR-03	7.50	5.00
12500PR-04	10.0	7.50
12500PR-05	12.5	10.0
12500PR-06	15.0	12.5
12500PR-07	17.5	15.0
12500PR-08	20.0	17.5
12500PR-09	22.5	20.0
12500PR-10	25.0	22.5
12500PR-11	27.5	25.0
12500PR-12	30.0	27.5
12500PR-13	32.5	30.0
12500PR-14	35.0	32.5
12500PR-15	37.5	35.0