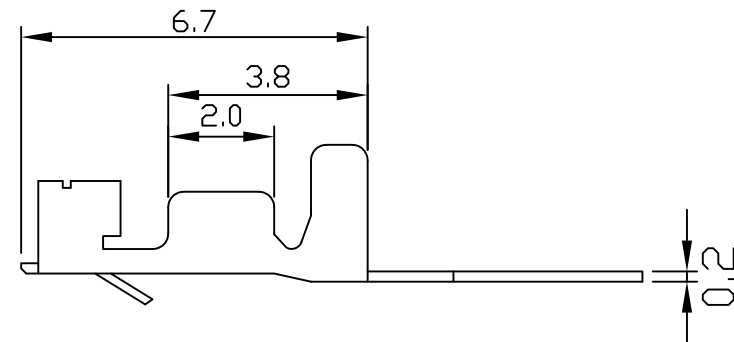
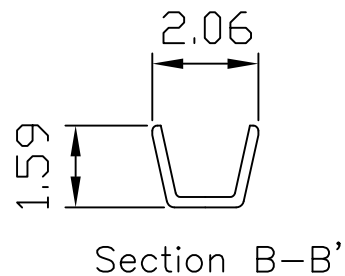
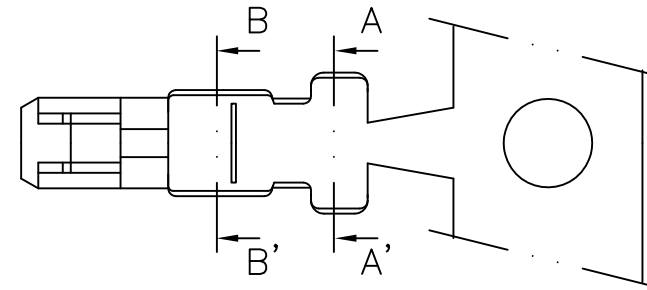
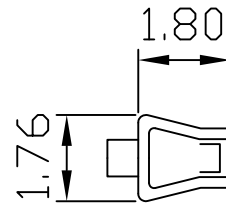
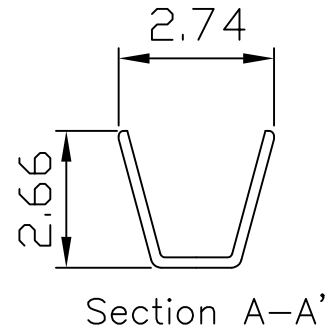


# 12500 .098" (2.5mm) PITCH TERMINAL

unit:mm

## Features:

- \* THICKNESS: 0.2mm
- \* MATES WITH: 12500H SERIES HOUSING
- \* ACCEPTS WITH: 12500PS 12500PR SERIES WAFER



PART NO.	WIRE RANGE	INSULATION O.D.	MATERIAL	FINISH	QTY/REEL
12500	AWG#22-#28	1.90mm(max)	Phosphor Bronze	Tin-plated	10,000