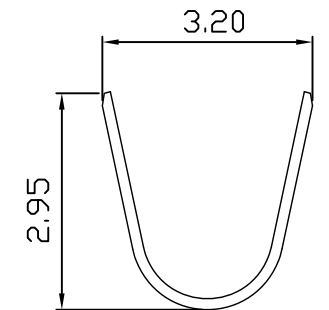
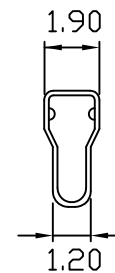
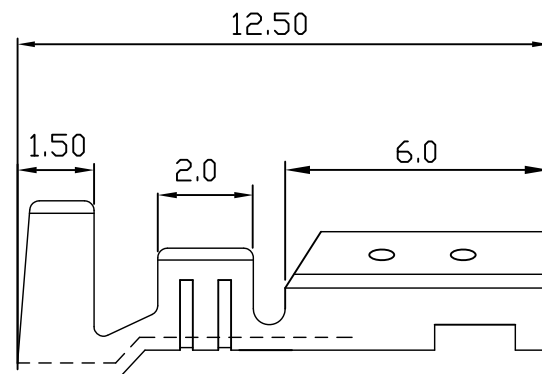
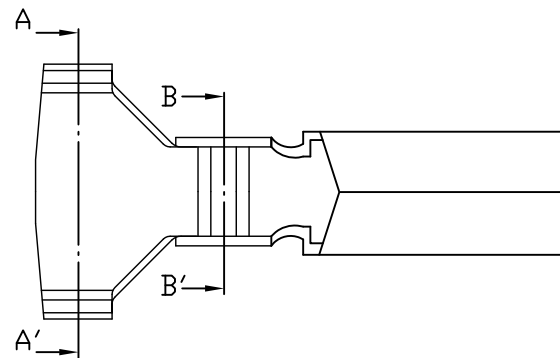


# 8396 SERIES .156" (3.96mm) PITCH CRIMP TERMINAL

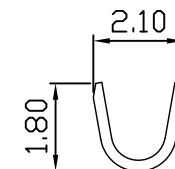
Features:

unit:mm

- \* THICKNESS: 0.2mm
- \* MAT'L: BRASS TIN PLATED
- \* MATES WITH: 8396H SERIES HOUSING



Section A-A'



Section B-B'

PART NO.	WIRE RANGE	INSULATION O.D.	MATERIAL	FINISH	QTY/REEL
8396	AWG#18-22	ø1.70~ø2.10mm	Brass	Tin-plated	5,000